

# UNL BUILDING SIGNAGE WORKSHEET

Order Online!



DEPARTMENT \_\_\_\_\_

COST OBJ NUMBER \_\_\_\_\_

CONTACT (FOR QUESTIONS) \_\_\_\_\_

PHONE #/ EMAIL ADDRESS \_\_\_\_\_

DATE \_\_\_\_\_

Once completed please submit to either 1700 Y ST, printing.unl.edu, or prepress2@unl.edu

PLEASE **INDICATE HOW MANY** YOU NEED OF EACH VERSION:

**NOTE:** All Signs measure 8.5 x11 unless otherwise noted.

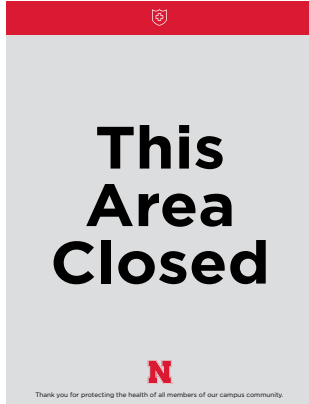
1



**Temporarily Closed**

- \_\_\_ Vinyl Adhesive back-\$2.00 ea. interior/exterior glass, wood doors
- \_\_\_ Paper Adhesive back-\$1.50 ea. wall, glass, wood, brick, or concrete
- \_\_\_ CIS 10 pt Cover-\$.60 ea.

2



**Area Closed**

- \_\_\_ Vinyl Adhesive back-\$2.00 ea. interior/exterior glass, wood doors
- \_\_\_ Paper Adhesive back-\$1.50 ea. wall, glass, wood, brick, or concrete
- \_\_\_ CIS 10 pt Cover-\$.60 ea.

3



**Enter Only**

- \_\_\_ Vinyl Adhesive back-\$2.00 ea. interior/exterior glass, wood doors
- \_\_\_ Paper Adhesive back-\$1.50 ea. wall, glass, wood, brick, or concrete
- \_\_\_ CIS 10 pt Cover-\$.60 ea.

4



**Exit Only**

- \_\_\_ Vinyl Adhesive back-\$2.00 ea. interior/exterior glass, wood doors
- \_\_\_ Paper Adhesive back-\$1.50 ea. wall, glass, wood, brick, or concrete
- \_\_\_ CIS 10 pt Cover-\$.60 ea.

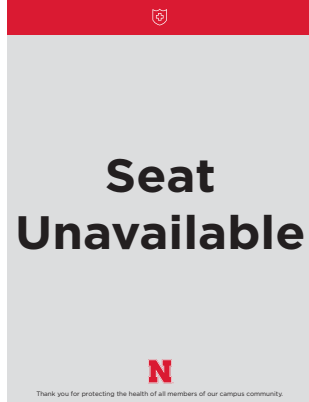
5



**Don't Move Furniture**

- \_\_\_ Vinyl Adhesive back-\$2.00 ea. interior/exterior glass, wood doors
- \_\_\_ Paper Adhesive back-\$1.50 ea. wall, glass, wood, brick, or concrete
- \_\_\_ CIS 10 pt Cover-\$.60 ea.

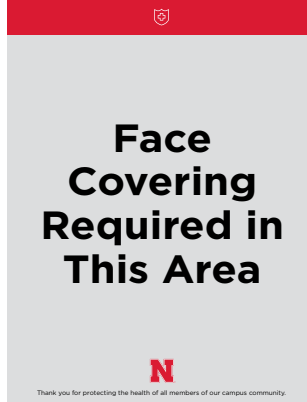
6



**Seat Unavailable**

- \_\_\_ Vinyl Adhesive back-\$2.00 ea. interior/exterior glass, wood doors
- \_\_\_ Paper Adhesive back-\$1.50 ea. wall, glass, wood, brick, or concrete
- \_\_\_ CIS 10 pt Cover-\$.60 ea.

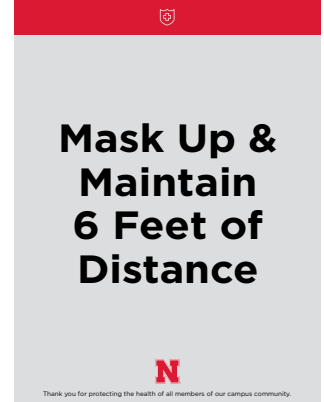
7



**Face Cov Required**

- \_\_\_ Vinyl Adhesive back-\$2.00 ea. interior/exterior glass, wood doors
- \_\_\_ Paper Adhesive back-\$1.50 ea. wall, glass, wood, brick, or concrete
- \_\_\_ CIS 10 pt Cover-\$.60 ea.

8

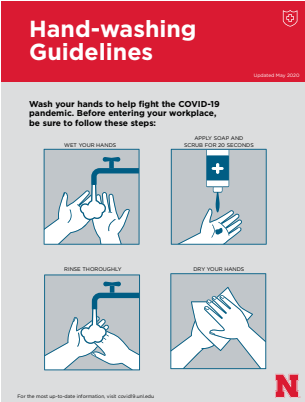


**Mask & Distance**

- \_\_\_ Vinyl Adhesive back-\$2.00 ea. interior/exterior glass, wood doors
- \_\_\_ Paper Adhesive back-\$1.50 ea. wall, glass, wood, brick, or concrete
- \_\_\_ CIS 10 pt Cover-\$.60 ea.

➔ PLEASE **INDICATE HOW MANY** YOU NEED OF EACH VERSION:

9



**Hand Washing Guidelines**

- \_\_\_ Vinyl Adhesive back-\$2.00 ea. interior/exterior glass, wood doors
- \_\_\_ Paper Adhesive back-\$1.50 ea. wall, glass, wood, brick, or concrete
- \_\_\_ C1S 10 pt Cover-\$.60 ea.

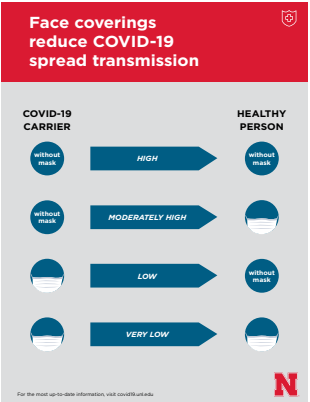
10



**Symptoms Guidelines**

- \_\_\_ Vinyl Adhesive back-\$2.00 ea. interior/exterior glass, wood doors
- \_\_\_ Paper Adhesive back-\$1.50 ea. wall, glass, wood, brick, or concrete
- \_\_\_ C1S 10 pt Cover-\$.60 ea.

11



**Face Cover Transmission**

- \_\_\_ Vinyl Adhesive back-\$2.00 ea. interior/exterior glass, wood doors
- \_\_\_ Paper Adhesive back-\$1.50 ea. wall, glass, wood, brick, or concrete
- \_\_\_ C1S 10 pt Cover-\$.60 ea.

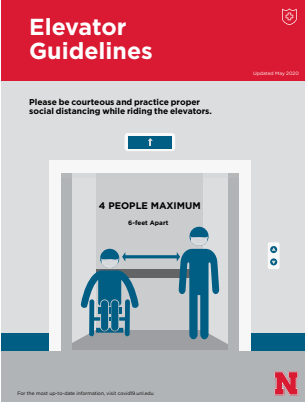
12



**Face Cover Guidelines**

- \_\_\_ Vinyl Adhesive back-\$2.00 ea. interior/exterior glass, wood doors
- \_\_\_ Paper Adhesive back-\$1.50 ea. wall, glass, wood, brick, or concrete
- \_\_\_ C1S 10 pt Cover-\$.60 ea.

13



**Elevator Guidelines**

- \_\_\_ Vinyl Adhesive back-\$2.00 ea. interior/exterior glass, wood doors
- \_\_\_ Paper Adhesive back-\$1.50 ea. wall, glass, wood, brick, or concrete
- \_\_\_ C1S 10 pt Cover-\$.60 ea.

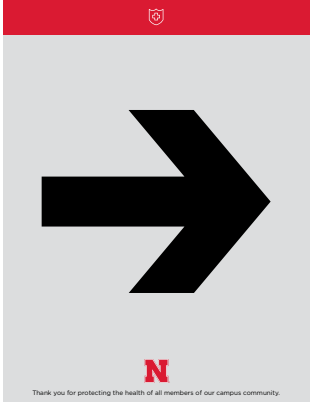
14



**Research Poster**

- \_\_\_ Vinyl Adhesive back-\$2.00 ea. interior/exterior glass, wood doors
- \_\_\_ Paper Adhesive back-\$1.50 ea. wall, glass, wood, brick, or concrete
- \_\_\_ C1S 10 pt Cover-\$.60 ea.

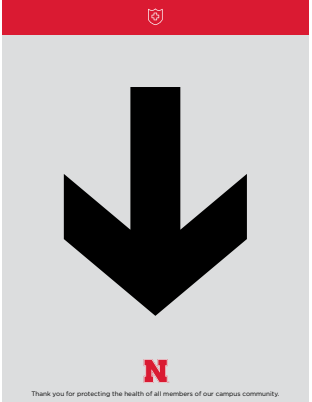
15



**R Dir Arrows**

- \_\_\_ Vinyl Adhesive back-\$2.00 ea. interior/exterior glass, wood doors
- \_\_\_ Paper Adhesive back-\$1.50 ea. wall, glass, wood, brick, or concrete
- \_\_\_ C1S 10 pt Cover-\$.60 ea.

16



**Downward Dir Arrows**

- \_\_\_ Vinyl Adhesive back-\$2.00 ea. interior/exterior glass, wood doors
- \_\_\_ Paper Adhesive back-\$1.50 ea. wall, glass, wood, brick, or concrete
- \_\_\_ C1S 10 pt Cover-\$.60 ea.

→ PLEASE **INDICATE HOW MANY** YOU NEED OF EACH VERSION:

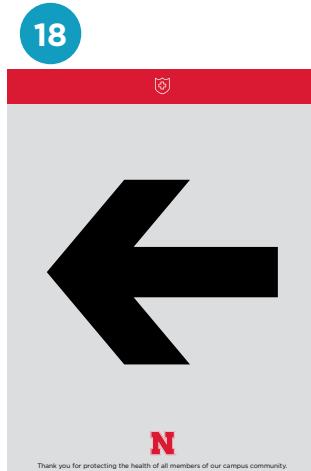


**Forward Dir Arrows**

\_\_\_ **Vinyl Adhesive back**-\$2.00 ea.  
interior/exterior glass, wood doors

\_\_\_ **Paper Adhesive back**-\$1.50 ea.  
wall, glass, wood, brick, or concrete

\_\_\_ **C1S 10 pt Cover**-\$0.60 ea.



**L Dir Arrows**

\_\_\_ **Vinyl Adhesive back**-\$2.00 ea.  
interior/exterior glass, wood doors

\_\_\_ **Paper Adhesive back**-\$1.50 ea.  
wall, glass, wood, brick, or concrete

\_\_\_ **C1S 10 pt Cover**-\$0.60 ea.



**L Up Corner Dir Arrows**

\_\_\_ **Vinyl Adhesive back**-\$2.00 ea.  
interior/exterior glass, wood doors

\_\_\_ **Paper Adhesive back**-\$1.50 ea.  
wall, glass, wood, brick, or concrete

\_\_\_ **C1S 10 pt Cover**-\$0.60 ea.



**R Down Corner Dir Arrows**

\_\_\_ **Vinyl Adhesive back**-\$2.00 ea.  
interior/exterior glass, wood doors

\_\_\_ **Paper Adhesive back**-\$1.50 ea.  
wall, glass, wood, brick, or concrete

\_\_\_ **C1S 10 pt Cover**-\$0.60 ea.



**R Corner Dir Arrows**

\_\_\_ **Vinyl Adhesive back**-\$2.00 ea.  
interior/exterior glass, wood doors

\_\_\_ **Paper Adhesive back**-\$1.50 ea.  
wall, glass, wood, brick, or concrete

\_\_\_ **C1S 10 pt Cover**-\$0.60 ea.

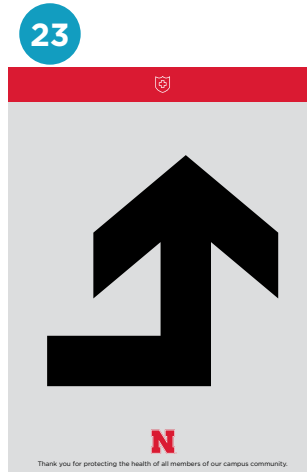


**L Corner Dir Arrows**

\_\_\_ **Vinyl Adhesive back**-\$2.00 ea.  
interior/exterior glass, wood doors

\_\_\_ **Paper Adhesive back**-\$1.50 ea.  
wall, glass, wood, brick, or concrete

\_\_\_ **C1S 10 pt Cover**-\$0.60 ea.

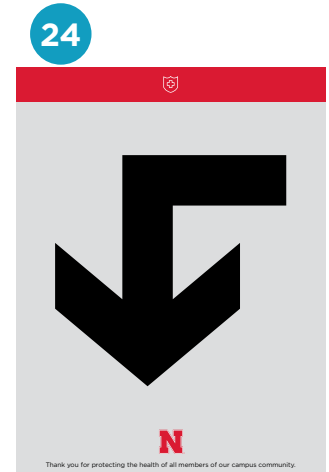


**R Up Corner Dir Arrows**

\_\_\_ **Vinyl Adhesive back**-\$2.00 ea.  
interior/exterior glass, wood doors

\_\_\_ **Paper Adhesive back**-\$1.50 ea.  
wall, glass, wood, brick, or concrete

\_\_\_ **C1S 10 pt Cover**-\$0.60 ea.



**L Down Corner Dir Arrows**

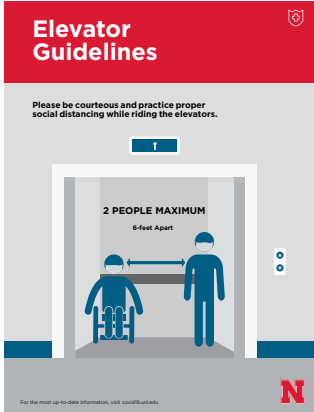
\_\_\_ **Vinyl Adhesive back**-\$2.00 ea.  
interior/exterior glass, wood doors

\_\_\_ **Paper Adhesive back**-\$1.50 ea.  
wall, glass, wood, brick, or concrete

\_\_\_ **C1S 10 pt Cover**-\$0.60 ea.

 PLEASE **INDICATE HOW MANY** YOU NEED OF EACH VERSION:

25



**2 People Elevator**

- \_\_\_ Vinyl Adhesive back-\$2.00 ea.  
interior/exterior glass, wood doors
- \_\_\_ Paper Adhesive back-\$1.50 ea.  
wall, glass, wood, brick, or concrete
- \_\_\_ C1S 10 pt Cover-\$ .60 ea.

26



**Exit Only Right Arrow**

- \_\_\_ Vinyl Adhesive back-\$2.00 ea.  
interior/exterior glass, wood doors
- \_\_\_ Paper Adhesive back-\$1.50 ea.  
wall, glass, wood, brick, or concrete
- \_\_\_ C1S 10 pt Cover-\$ .60 ea.

27



**Enter Only Right Arrow**

- \_\_\_ Vinyl Adhesive back-\$2.00 ea.  
interior/exterior glass, wood doors
- \_\_\_ Paper Adhesive back-\$1.50 ea.  
wall, glass, wood, brick, or concrete
- \_\_\_ C1S 10 pt Cover-\$ .60 ea.

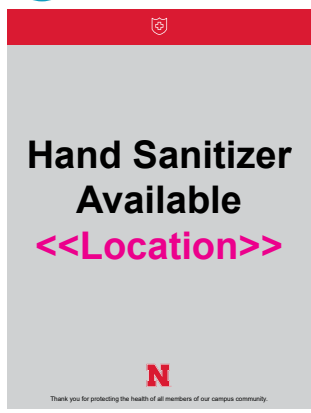
# Variable Data Signs

POSTERS WITH <<EDITABLE>> INFORMATION TO FIT YOUR NEEDS.

 PLEASE **INDICATE HOW MANY** YOU NEED OF EACH VERSION:

Space assessments must be requested and verified before installing occupancy signs.  
Request form: [go.unl.edu/space-assessment](http://go.unl.edu/space-assessment)

28



**Hand Sanitizer Available**

- \_\_\_ Vinyl Adhesive back-\$2.00 ea.  
interior/exterior glass, wood doors
- \_\_\_ Paper Adhesive back-\$1.50 ea.  
wall, glass, wood, brick, or concrete
- \_\_\_ C1S 10 pt Cover-\$ .60 ea.

29



**Room Occ**

- \_\_\_ Vinyl Adhesive back-\$2.00 ea.  
interior/exterior glass, wood doors
- \_\_\_ Paper Adhesive back-\$1.50 ea.  
wall, glass, wood, brick, or concrete
- \_\_\_ C1S 10 pt Cover-\$ .60 ea.

30



**Lab & Research Editable**

- \_\_\_ Vinyl Adhesive back-\$2.00 ea.  
interior/exterior glass, wood doors
- \_\_\_ Paper Adhesive back-\$1.50 ea.  
wall, glass, wood, brick, or concrete
- \_\_\_ C1S 10 pt Cover-\$ .60 ea.

Comments/Variable Date Information:

---



---



---

# Floor Clings

12"X12" FLOOR DECALS

31



32



33



34



## L-Corner Arrow FloorCling

Vinyl Adhesive back

\_\_\_ QTY: 1-9-\$8.00 ea.

\_\_\_ QTY: 10 or more-\$7.50 ea.

\_\_\_ 100 or more-check for price

\_\_\_ Carpet Floor

\_\_\_ Hard Floor

## R-Corner Arrow FloorCling

Vinyl Adhesive back

\_\_\_ QTY: 1-9-\$8.00 ea.

\_\_\_ QTY: 10 or more-\$7.50 ea.

\_\_\_ 100 or more-check for price

\_\_\_ Carpet Floor

\_\_\_ Hard Floor

## Straight Arrow FloorCling

Vinyl Adhesive back

\_\_\_ QTY: 1-9-\$8.00 ea.

\_\_\_ QTY: 10 or more-\$7.50 ea.

\_\_\_ 100 or more-check for price

\_\_\_ Carpet Floor

\_\_\_ Hard Floor

## Social Distance FloorCling

Vinyl Adhesive back

\_\_\_ QTY: 1-9-\$8.00 ea.

\_\_\_ QTY: 10 or more-\$7.50 ea.

\_\_\_ 100 or more-check for price

\_\_\_ Carpet Floor

\_\_\_ Hard Floor

# Additional Items

➔ PLEASE **INDICATE HOW MANY** YOU NEED OF EACH VERSION:

For the most up-to date signage and options visit [printing.unl.edu](http://printing.unl.edu)

**NOTE:** All Signs measure 8.5 x11 unless otherwise noted.

35



## Hand Washing Poster

\_\_\_ Vinyl Adhesive back-\$2.00 ea.  
interior/exterior glass, wood doors

\_\_\_ Paper Adhesive back-\$1.50 ea.  
wall, glass, wood, brick, or concrete

\_\_\_ C1S 10 pt Cover-\$.60 ea.

36



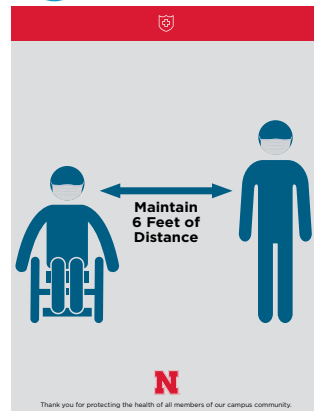
## Social Distancing Poster

\_\_\_ Vinyl Adhesive back-\$2.00 ea.  
interior/exterior glass, wood doors

\_\_\_ Paper Adhesive back-\$1.50 ea.  
wall, glass, wood, brick, or concrete

\_\_\_ C1S 10 pt Cover-\$.60 ea.

37



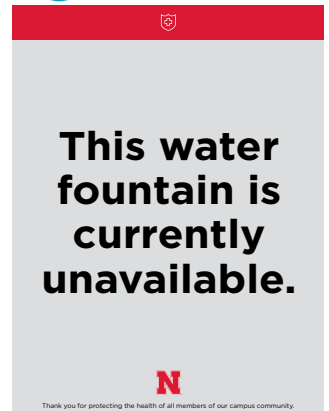
## Social Distancing 2 Poster

\_\_\_ Vinyl Adhesive back-\$2.00 ea.  
interior/exterior glass, wood doors

\_\_\_ Paper Adhesive back-\$1.50 ea.  
wall, glass, wood, brick, or concrete

\_\_\_ C1S 10 pt Cover-\$.60 ea.

38



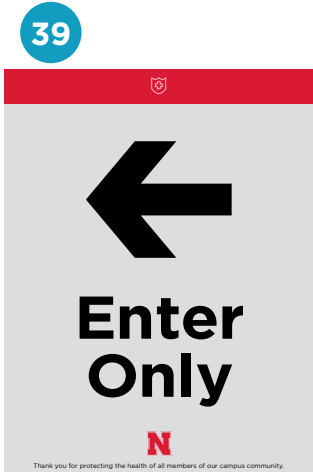
## Water Fountain Closed

\_\_\_ Vinyl Adhesive back-\$2.00 ea.  
interior/exterior glass, wood doors

\_\_\_ Paper Adhesive back-\$1.50 ea.  
wall, glass, wood, brick, or concrete

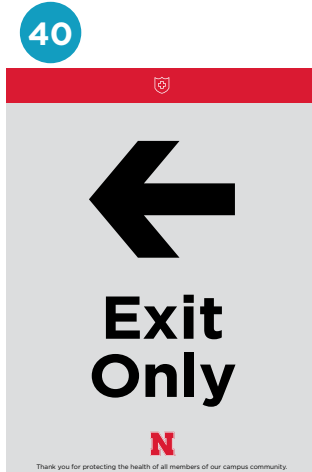
\_\_\_ C1S 10 pt Cover-\$.60 ea.

→ PLEASE INDICATE HOW MANY YOU NEED OF EACH VERSION:



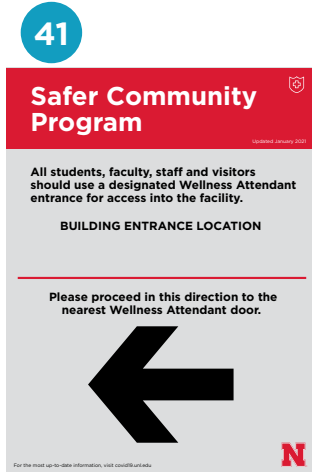
**Enter Only Left Arrow**

- \_\_\_ Vinyl Adhesive back-\$2.00 ea. interior/exterior glass, wood doors
- \_\_\_ Paper Adhesive back-\$1.50 ea. wall, glass, wood, brick, or concrete
- \_\_\_ C1S 10 pt Cover-\$0.60 ea.



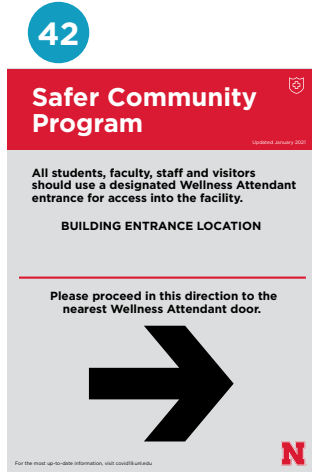
**Exit Only Left Arrow**

- \_\_\_ Vinyl Adhesive back-\$2.00 ea. interior/exterior glass, wood doors
- \_\_\_ Paper Adhesive back-\$1.50 ea. wall, glass, wood, brick, or concrete
- \_\_\_ C1S 10 pt Cover-\$0.60 ea.



**Building Location Left**

- \_\_\_ Vinyl Adhesive back-\$2.00 ea. interior/exterior glass, wood doors
- \_\_\_ Paper Adhesive back-\$1.50 ea. wall, glass, wood, brick, or concrete
- \_\_\_ C1S 10 pt Cover-\$0.60 ea.



**Building Location Right**

- \_\_\_ Vinyl Adhesive back-\$2.00 ea. interior/exterior glass, wood doors
- \_\_\_ Paper Adhesive back-\$1.50 ea. wall, glass, wood, brick, or concrete
- \_\_\_ C1S 10 pt Cover-\$0.60 ea.



**No Building Location Left**

- \_\_\_ Vinyl Adhesive back-\$2.00 ea. interior/exterior glass, wood doors
- \_\_\_ Paper Adhesive back-\$1.50 ea. wall, glass, wood, brick, or concrete
- \_\_\_ C1S 10 pt Cover-\$0.60 ea.



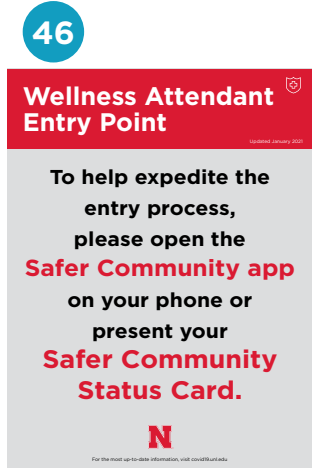
**No Building Location Right**

- \_\_\_ Vinyl Adhesive back-\$2.00 ea. interior/exterior glass, wood doors
- \_\_\_ Paper Adhesive back-\$1.50 ea. wall, glass, wood, brick, or concrete
- \_\_\_ C1S 10 pt Cover-\$0.60 ea.



**Safer Comm App Status**

- \_\_\_ Vinyl Adhesive back-\$2.00 ea. interior/exterior glass, wood doors
- \_\_\_ Paper Adhesive back-\$1.50 ea. wall, glass, wood, brick, or concrete
- \_\_\_ C1S 10 pt Cover-\$0.60 ea.



**Wellness Attendant Entry**

- \_\_\_ Vinyl Adhesive back-\$2.00 ea. interior/exterior glass, wood doors
- \_\_\_ Paper Adhesive back-\$1.50 ea. wall, glass, wood, brick, or concrete
- \_\_\_ C1S 10 pt Cover-\$0.60 ea.

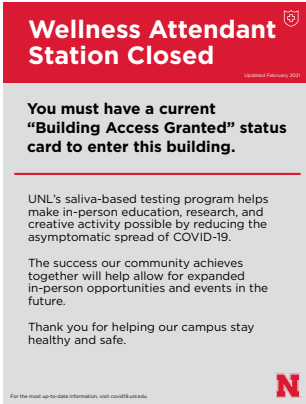


**Testing Info Cards**

- \_\_\_ C1S 10 pt Cover-\$0.60 ea.

→ PLEASE **INDICATE HOW MANY** YOU NEED OF EACH VERSION:

48



**Building Access**

- \_\_\_ **Vinyl Adhesive back**-\$2.00 ea.  
interior/exterior glass, wood doors
- \_\_\_ **Paper Adhesive back**-\$1.50 ea.  
wall, glass, wood, brick, or concrete
- \_\_\_ **C1S 10 pt Cover**-\$0.60 ea.

49



**Mask Guidelines**

- \_\_\_ **Vinyl Adhesive back**-\$2.00 ea.  
interior/exterior glass, wood doors
- \_\_\_ **Paper Adhesive back**-\$1.50 ea.  
wall, glass, wood, brick, or concrete
- \_\_\_ **C1S 10 pt Cover**-\$0.60 ea.

# Display Options

➔ PLEASE INDICATE HOW MANY & WHICH GRAPHIC YOU NEED OF EACH VERSION:



**Indoor/ Outdoor A-Frame  
(white or black)**

\$135.00 plus shipping  
Coated & coroplast- 2qty \$50  
27"W x 38.5"H x 19"D

Graphic Size: 24"x36" Image: 23"x35"

\_\_\_ QTY  
\_\_\_ Graphic #



**Indoor Only A-Frame**

\$83.75 plus shipping  
Coated- 2 qty \$35  
25.5"Wx46.75"Hx21"D  
Graphic Size: 23.5x33.5

\_\_\_ QTY  
\_\_\_ Graphic #



**Sidewalk Frame with Water Base**

\$235 plus shipping  
Coated- 2qty \$35  
30.5"W x 40"H x 19"D  
Graphic Size: 23.5x33.5

\_\_\_ QTY  
\_\_\_ Graphic #



**Breeze 2**

\$38.00 plus shipping  
Visible Graphics- 11W x 17H

\_\_\_ QTY  
\_\_\_ Graphic #



**Phoenix Mini**

\$53.38 plus shipping  
Visible Graphics- 15.5W x 31.5H

\_\_\_ QTY  
\_\_\_ Graphic #



**Orient 800 Retractable Banner**

\$277.27 plus shipping  
Visible Graphics 31.5"W x 60" up to 83.25 "H

\_\_\_ QTY  
\_\_\_ Graphic #